

Less Hassle, Maximum Benefits: Client Device Management from Critical Technology Services



NEVER TOUCH A LAPTOP OR DEVICE AGAIN. WE ENSURE THE HIGHEST LEVEL OF SECURITY, SERVICE, AND VALUE AT EACH STEP.

At Critical Technology Services (CTS), we streamline your operations by handling the inventory, configuration, and shipment of thousands of devices each month. Let our expert team take care of this for you, freeing up your staff to concentrate on mission-critical tasks.

Client device management can be a barrier to innovation and speed; Critical Technology Services provides remote services that automate laptop deployment & ensure client devices are secure, optimized, and ready for work in just a few clicks.

Our end-to-end, secure services include:

Touchless Client Device Ordering & Deployment

- Same day quote, order, ship, and track
- Image and asset tag equipment and kit deliver to include monitors/docking stations
- Inventory management of client devices in our secure and insured warehouse
- Startup services delivered remote or onsite

Secure & Simple Return Logistics

- Return Kit that includes a padded box with return labels, instructions, and pickup schedule
- Comprehensive reporting with receipt of device, condition code, hard drive wiping, factory reset and restock
- Inventory portal with customer support line for full visibility into the entire chain-of-custody at every step

Experienced and trustworthy desktop support

- Streamline OS & custom software updates while maintaining a log of all actions and date of completion
- Efficiently construct, install, and test customized images and configurations
- Deliver 24x7 troubleshooting with gentle hand-holding for password resets, AV & general application technical support

Maximum Value Recovery

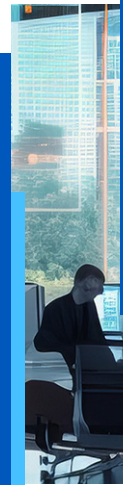
- Secure disposition to comply with industry standards like GDPR, HIPPA, and PCI
- Customer portal to track each serial number as it is deinstalled, transported, received, wiped, and resold
- Established relationships and years of experience allow us to convert a wide array of assets into cash



Contact us today to maximize your resources and the return of your IT investments with Critical Technology Services.

critical-technology.com

Experience seamless and secure client device management with Critical Technology Services.



Unlock the following benefits with CTS:



Save time and eliminate mundane tasks:

Let our experts handle the entire process - from deinstalling and transporting assets to securely erasing and purchasing retired devices. This frees up your valuable time and energy, allowing you to focus on important tasks that give your business a competitive edge.



Never touch a device again:

Our comprehensive services cover every aspect of device management, including remote ordering, secure endpoint protection, full lifecycle tracking, and managed inventory in a secure warehouse. With our efficient and transparent operations, you'll never have to touch a device again.



Enhance employee productivity:

We ensure that your devices are up-to-date and optimized for seamless operations. Our desktop support services include updates to your operating system and custom software, creation and installation of customized images and configurations, as well as 24/7 troubleshooting and technical support.



Implement hassle-free, return logistics:

With detailed reporting of device condition and restocking processes, we make return logistics effortless. We provide padded boxes with clear instructions and schedules for convenient shipment, making the process smooth and efficient.



Save money and maximize resources:

By partnering with Critical Technology Services, you can save money and focus your resources on high-value initiatives. We offer fast quote, order, and shipment tracking, image and asset tagging for easy organization, and the opportunity to sell retired assets to us with a Certificate of Erasure.



Protect your fleet at every step.

With our secure erasure methods and adherence to stringent data protection protocols, you can trust that your sensitive information is safe. We prioritize data security throughout the entire client device management process, giving you peace of mind and minimizing the risk of data breaches.

Learn more at critical-technology.com